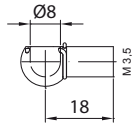




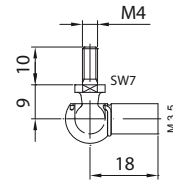
Winkelgelenke

Material Stahl blau verzinkt
Optional Edelstahl W.1.4305/AISI 303 (V2) und W.1.4404/AISI 316 (V4)

M 3,5

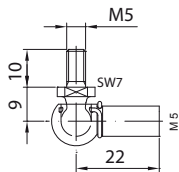


PX 18

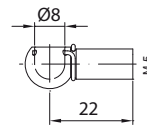


WX 18

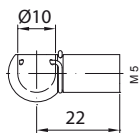
M 5



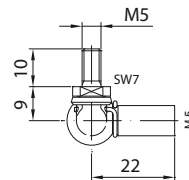
WG 22
V2/V4



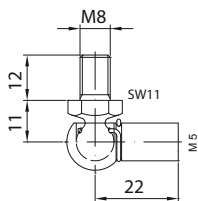
PF 22



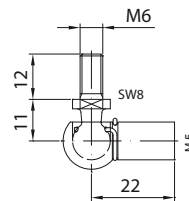
PX 22



WD 22

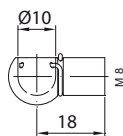


WX 22
V2

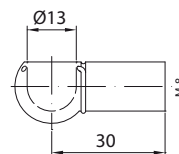


WY 22

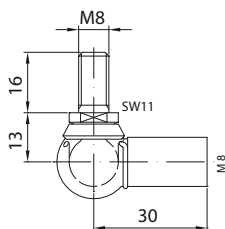
M 8



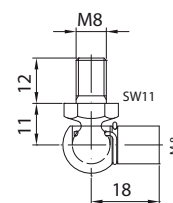
PF 18



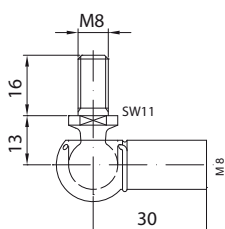
PF 30



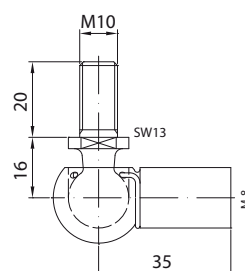
WD 30



WG 18
V2



WG 30
V2/V4



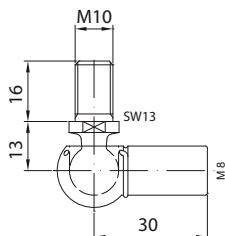
WS 35



Winkelgelenke

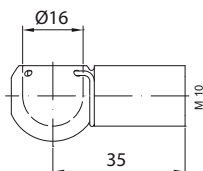
Material Stahl blau verzinkt
Optional Edelstahl W.1.4305/AISI 303 (V2) und W.1.4404/AISI 316 (V4)

M 8

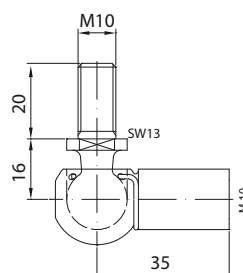


WX 30

M 10



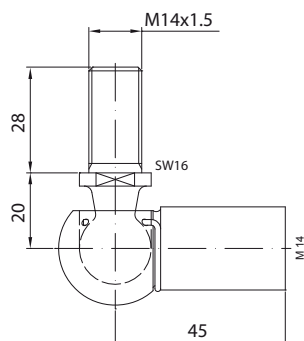
PF 35



WG 35

V2/V4

M 14



WG 45

V2/V4