

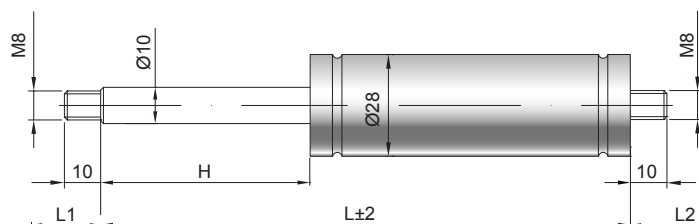


# Ölbremse D 10-28

|                |                                 |
|----------------|---------------------------------|
| Dämpfungskraft | 120 - 1200 Newton               |
| Kolbenstange   | Ø 10 mm, Stahl hartverchromt    |
| Druckrohr      | Ø 28 mm, Stahl schwarz lackiert |
| Anschlüsse     | Stahl blau verzinkt             |

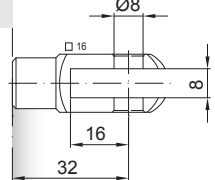
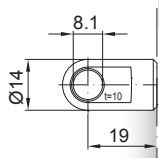
GZ 10

GZ 10



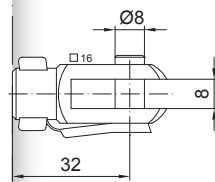
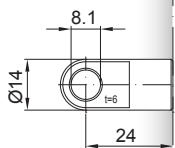
AU 19

GA 32



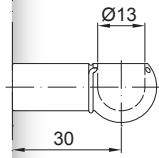
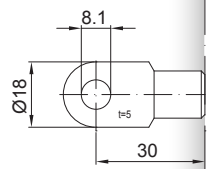
AS 24

GG 32



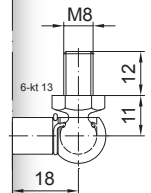
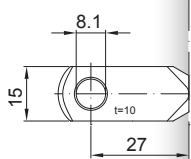
AS 30

PF 30



AR 27

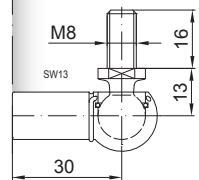
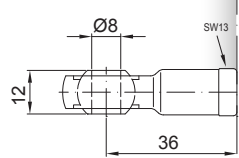
WG 18



bis max. 800 N

AG 36

WG 30



**Details**

Standardhübe H (mm)  
40, 50, 60, 80, 85, 100, 120, 140, 150,  
160, 180, 200, 220, 250, 270, 300, 325,  
350, 400, 450, 510, 610, 710

Standardlänge GL  
L = 2 x H + 45  
GL = L + L1 + L2

Extras  
6 - Schutzrohr

Dämpfung  
1 = Zugdämpfer  
2 = Druckdämpfer  
3 = beidseitig wirkender Dämpfer

Weitere Anschlüsse finden Sie hier ▶  
Passende Beschläge finden Sie hier ▶